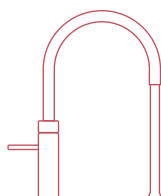


Installation guide Front

This guide is solely intended for the installation of the Front tap.
After mounting the tap, continue by installing the tank as shown in
the general installation guide.



Introduction

About the Front

The Front is a tap for hot, cold, boiling, and filtered and chilled still or sparkling water with a double-walled, straight spout. The Front is fitted with a child-proof, push-push-turn textured ring for boiling water. The lever for hot and cold water is located on the top of the tap. Note: the controls for the Front are different from other Quooker taps. Observe the operating instructions for the Front in this guide. The operating instructions are as follows:

- Boiling water: push-push-turn
- Filtered, chilled, still water: one click, anticlockwise*
- Filtered, chilled, sparkling water: two clicks, anticlockwise*
- Cold: raise lever
- Hot: turn lever left

* Only applies if you also have a Quooker CUBE. To use the CUBE functions, you need to remove a pin from the Front. Note: remove the pin before installing the Front. You can find information on how to remove this pin from the Front in chapter A.

You can find additional information on how to operate the Front in chapter C.

Despite all the safety features incorporated in the product, anyone using the Quooker system must keep in mind the risks of using boiling water in general. Incorrect use can lead to injury. Therefore always read the guide carefully before use.

Installation, maintenance and warranty

In this installation guide you will find the technical specifications, installation instructions, and further information for the Front. To install the tank, refer to the installation guide of the tank.

When you notice that the flow of boiling water slows down, clean the aerator. You can find information on how to clean the aerator and the tap in chapter D.

The warranty period is two years according to our general warranty conditions.

Users

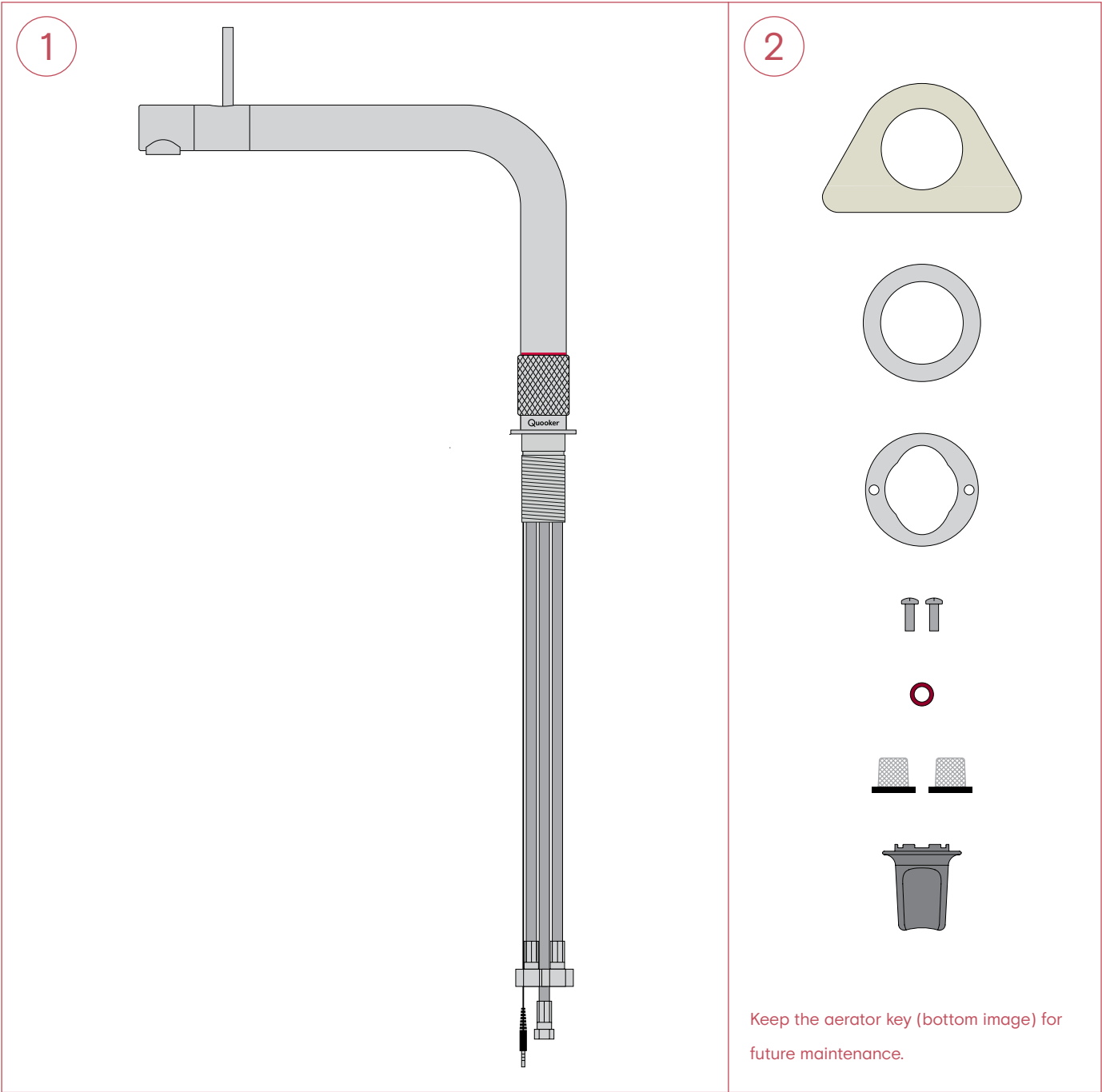
You can find information for users in the installation guide of your tank.

Technical specifications

Tap	Front
Tap hole size	35 mm
Recomm. temp. hot water	60 °C
Tap base ring available	No

Contents of the package

1. Front
2. White tap support, metal ring, screw ring, screws, fibre washer(s), inlet hose screens, aerator key.



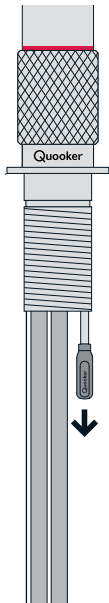
A

Removing the pin

(when installing with a CUBE for filtered and chilled still and sparkling water)

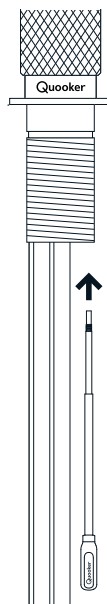
- The Front comes with a pin that blocks the clicking of the textured ring. To use the tap with chilled still or sparkling water, remove this pin from the Front.

1



1. Remove the pin

Remove the pin from the underside of the tap by turning the pin anticlockwise.



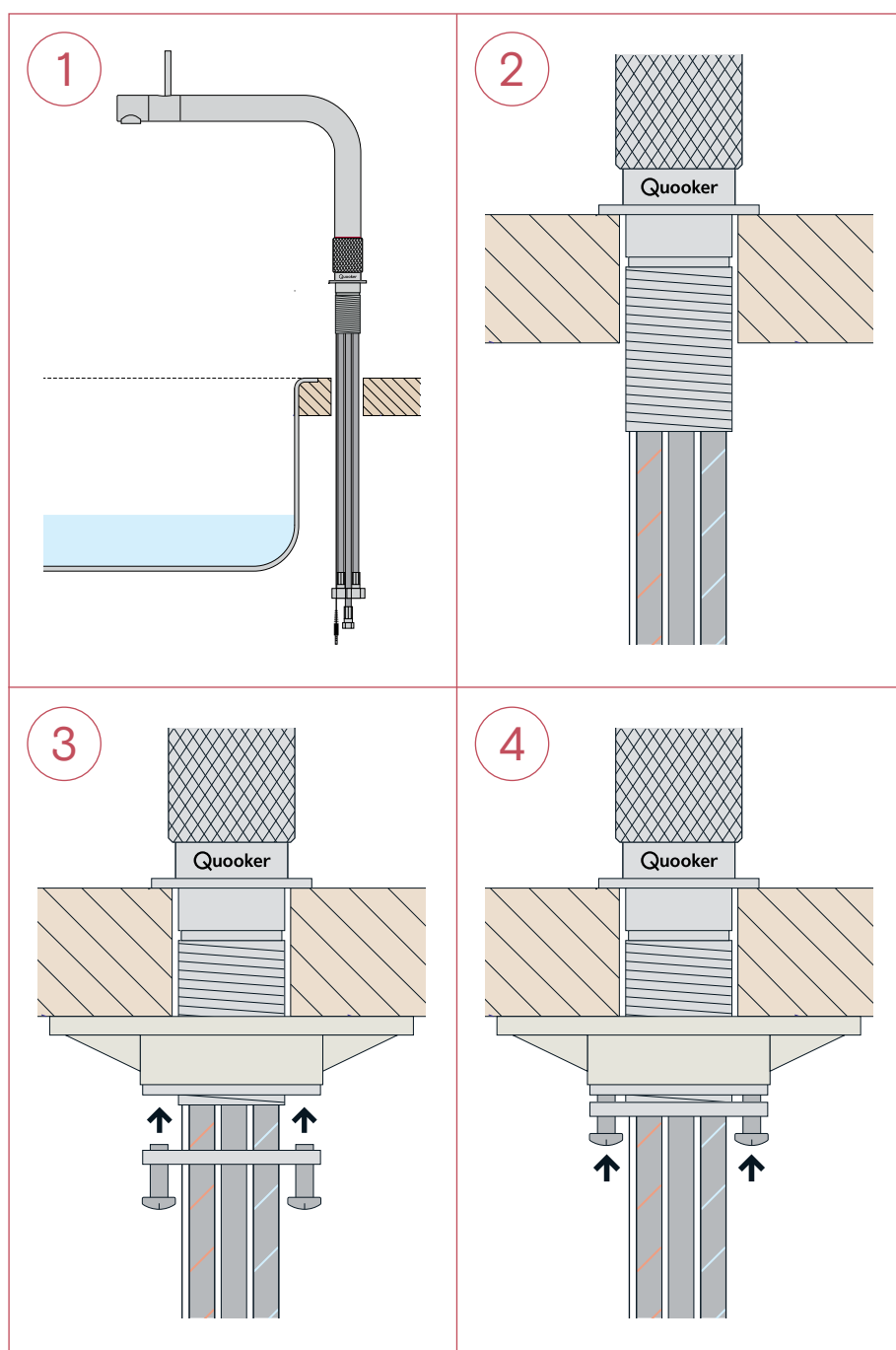
If necessary: install the pin

Install the pin in the underside of the tap by turning the pin clockwise. Note: the textured ring must be in the furthest left position (turned clockwise) before you install the pin. Damage can occur if the ring is positioned incorrectly.

B

Installing the Front

- The tap hole for the Front must be 35 mm in diameter.
- The reach of the spout is 32 cm from the centre of the tap hole – keep this in mind when choosing the position of the tap.



1. Drill a hole

Determine the position of the tap and drill a hole with a diameter of 35 mm. Use a drill bit that is suitable for the material.

2. Push the tap through the work surface

Push the tap through the hole in the work surface.

3. Tighten the screw ring

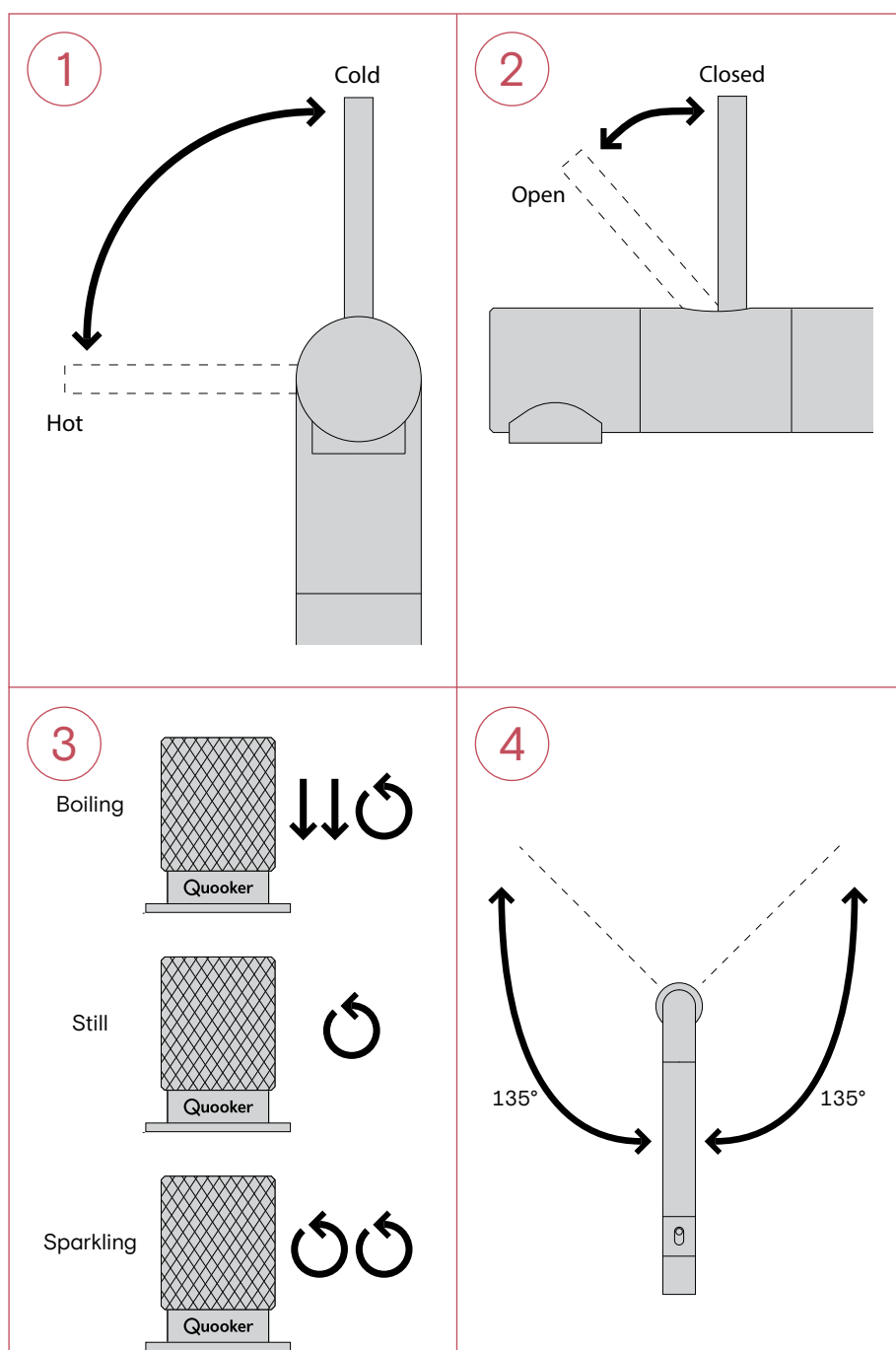
Adjust the position of the tap to ensure that the Quooker logo is facing the user. Install the white tap support (only required for stainless steel work surfaces or thin work surfaces of less than 10 mm), the metal ring, and the screw ring on the underside of the tap and tighten the screw ring. Hold the tap underneath the textured ring when you tighten the screw ring.

4. Tighten the screws

Secure the tap by tightening the screws in the screw ring.

C

Operation



1. Hot and cold

Turn the tap lever upwards for cold water and to the left for hot water.

2. Adjust the water flow

Open the tap by moving the lever towards you. The further you move the lever towards you, the more water will flow from the tap.

3. Operating functions

Boiling water: push-push-turn

Filtered, chilled, still water:

one click, anticlockwise*

Filtered, chilled, sparkling water:

two clicks, anticlockwise*

4. Swivel function

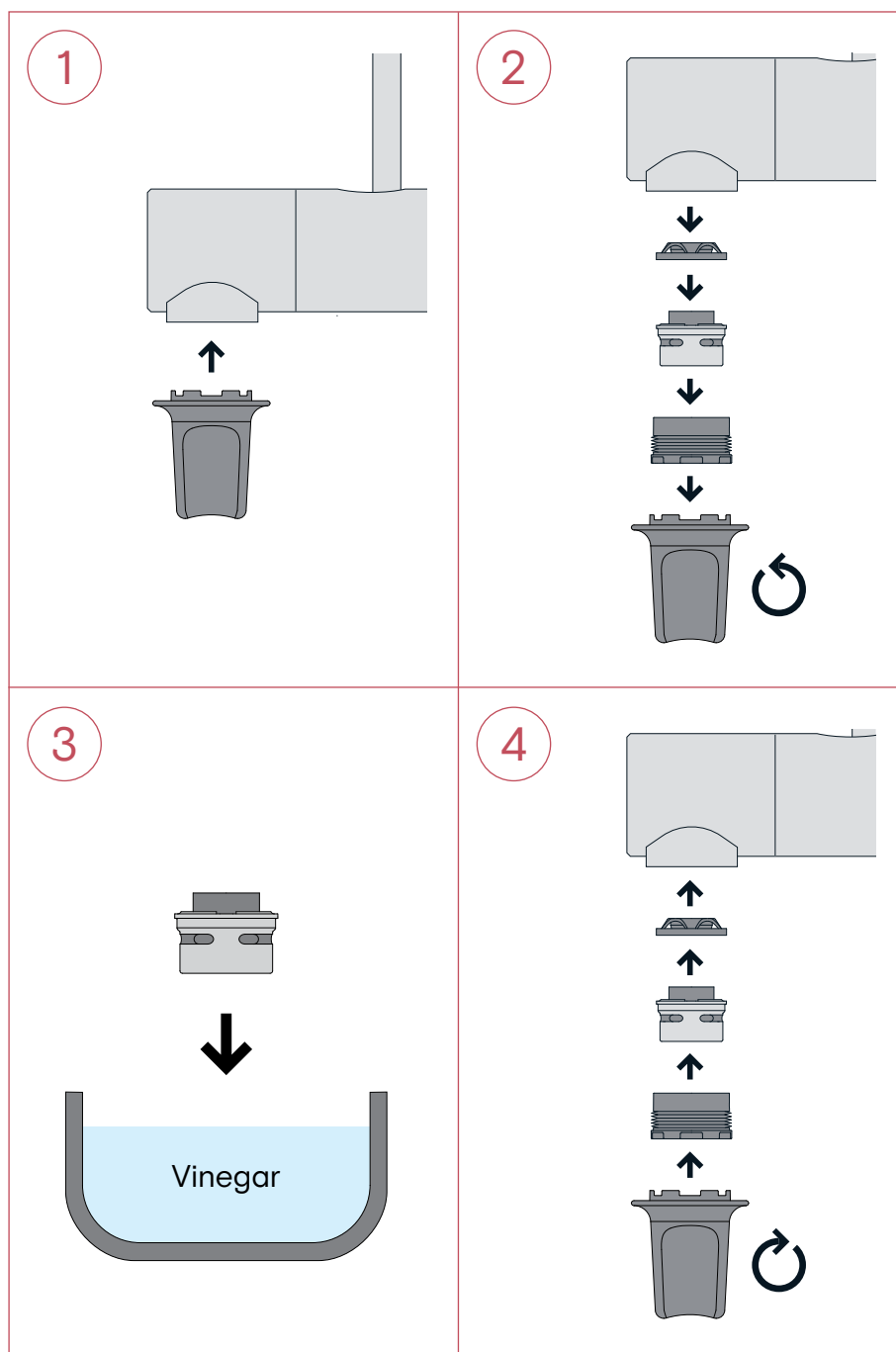
The Front can be rotated up to 270 degrees.

* Only applies if you also have a CUBE installed.

D

Maintenance

- When you notice that the flow of boiling water slows down, remove the aerator to clean it. Use the aerator key (keep the key for future maintenance) to remove the aerator from the tap.
- Clean a Front tap with a stainless steel finish by spraying a little window cleaner onto a damp cloth (not directly onto the tap) and then wiping the tap down. Dry the tap after use to avoid limescale.
- The black Front tap will remain at its best if you only clean it using hot water and a cleaning cloth. Dry the tap after use to avoid limescale. Do not use cleaning products that contain carbon compounds, such as isopropanol, alcohol, and ethanol, as these will damage the finish.



1. Position the aerator key

Position the aerator key onto the nozzle.

2. Remove the aerator

Turn the aerator key anticlockwise to remove the gasket, aerator, and screw nut from the tap.

3. Clean the aerator

Leave the aerator to soak in vinegar for around half an hour. Then remove any remaining limescale.

4. Install the aerator

Put the gasket, aerator, and the screw nut back into the tap. Position the aerator key onto the screw nut and turn the aerator key clockwise to install the components.

Note: cleaning products including dishwashing brushes, scouring sponges, all-purpose cleaning agents, scale removers, acidic agents, and solvents may damage the tap.

Quooker®

Quooker UK Ltd.
Beaumont Buildings
Great Ducie Street
Manchester M3 1PQ
+44 345 833 3333
enquiries@quooker.co.uk
www.quooker.co.uk