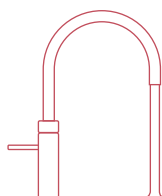


Installation guide Scale Control Plus

Read this guide before installation



Quooker®

Introduction

How does the Quooker Scale Control Plus work?

The Scale Control Plus reduces the hardness of the water in order to prevent limescale build-up in the tank. This extends its lifespan and improves the taste of the water. The Scale Control Plus consists of a filter head and a cartridge, which is inserted into the head. This cartridge softens the water that flows through it by means of an ion exchanger. The cartridge must be replaced after a certain period of time, which depends on the mains water hardness and how much Quooker boiling water is used. Replace the cartridge before it becomes completely saturated.

Determining the tank type

The installation instructions of chapter D contain two sections. You will have to determine the type of tank you have in order to choose the correct section.

- **Type A** In case the serial number starts with VBW, you have a type A tank.
- **Type B** In case the serial number starts with VCW, you have a type B tank.

When the Scale Control is to be replaced by a Scale Control Plus

Please note: in case of a Type B Tank, the Scale Control Plus should be installed before the inlet combination valve. It is therefore important to follow the instructions as shown in this installation manual.

Installing the Quooker system for the first time

Using the installation manual, first install the Quooker tank and connect it to the tap. Then use this manual to install the Scale Control Plus.

Lifespan of the cartridge

The Scale Control Plus cartridge needs to be replaced regularly. The replacement frequency depends on how hard the water is and how much water is used. Timely replacement of the cartridge prevents the build-up of limescale in the Quooker system. For Quooker systems installed after October 2017, the included Scale Control Plus Meter can be installed. The Scale Control Plus Meter will sound an alarm signal when the cartridge needs to be replaced. Before mounting the meter, use the Water Hardness Test Kit provided to determine the cold mains water hardness, as described in Part A. After doing so, mount the Scale Control Plus Meter and connect it to the Quooker tank, as described in Part E.

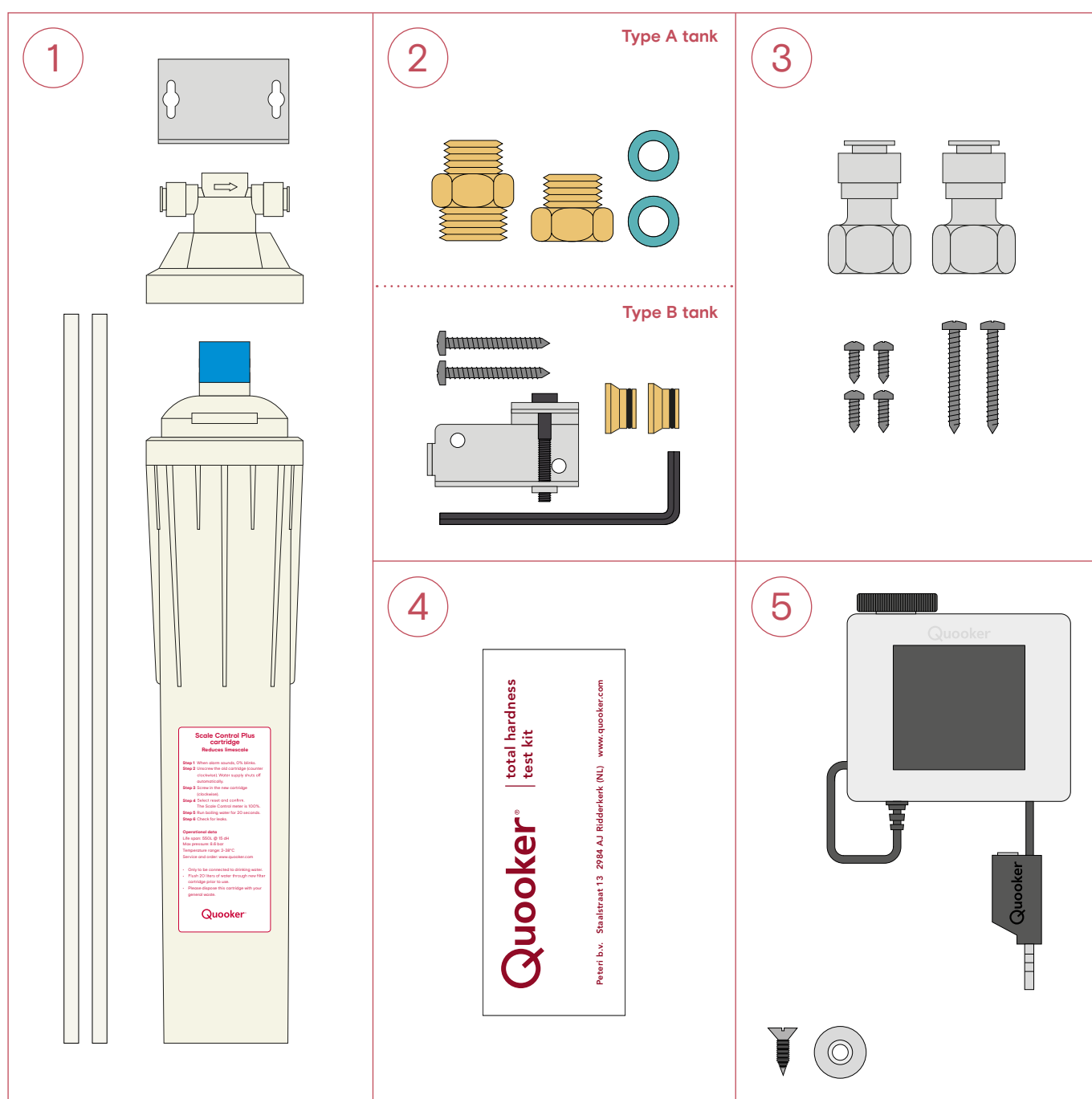
For Quooker systems installed before October 2017, it is not possible to use the Scale Control Plus Meter supplied. The cartridge lifespan can be determined in a different way. Before installing the Scale Control Plus, test the water hardness with the Water Hardness Test Kit provided. Part A of this guide features detailed instructions on how to do this. With the help of this value, the service life of the cartridge can then be determined on the basis of the hardness table supplied. See Part B.

Technical specifications

Height	470 mm
Diameter	100 mm
Maximum operating pressure	8,7 bar

Package contents

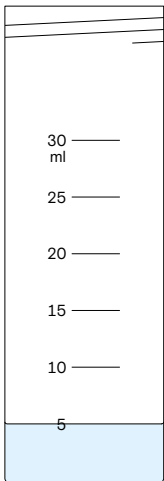
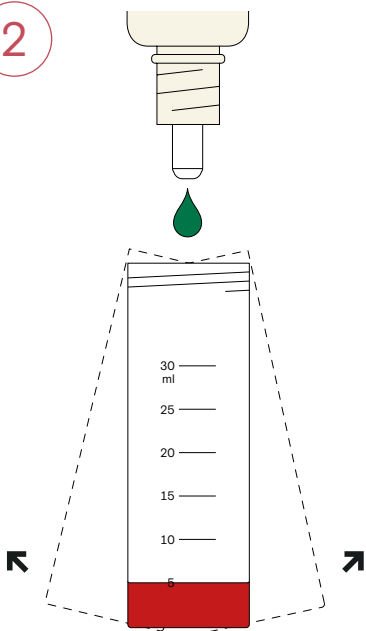
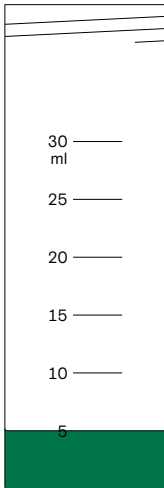
1. Mounting bracket, head, cartridge, two plastic tubes
2. For the installation of a type A tank: coupling piece, adapter, two fibre washers
For the installation of a type B tank: two long screws, mounting bracket inlet combination, two inserts, allen key
3. Two push-fits, four short screws, two long screws
4. Total Hardness Test Kit
5. Scale Control Plus Meter, metal washer, screw and sticker



A

Hardness testing

- Test your water hardness with the Total Hardness Test Kit, as described below, to determine the expected cartridge lifespan.
- Ensure the Scale Control Plus is working optimally by comparing the water hardness of the cold mains water to the hardness of the Quooker tank water. The second value should be lower.

<p>1</p> 	<p>2</p> 
<p>3</p>  <p>● + ● + ... = °dH</p>	

1. Filling test tube

Take the test tube out of its box. Take a sample of water from the mains cold water feed. Rinse out the test bottle with this sample water then fill to the 5 ml mark.

2. Adding reagent

Slowly add the reagent drop by drop, all the while swirling gently to mix the water. Count the number of drops it takes to turn the red colour of the solution to green.

3. Determining water hardness

One drop of the reagent is the equivalent to 1.0°dH (degree of hardness) – For example, if it takes 9 drops for the sample to turn to green, this means your water has a water hardness of 9°dH.

B

Hardness table (for systems before October 2017)

- The left side of the table shows the reduced water hardness, derived from the mains water hardness. The right side of the table shows the expected lifespan of the cartridge, derived from the mains water hardness and the type of Quooker tank used. For continuous optimum performance replace the cartridge at the end of the lifespan.
- Enter the replacement date for the cartridge in the table below. Keeping this table in a handy place will remind you to order a new cartridge on time.
- For Quooker systems installed after October 2017, the life of the cartridge is determined by the Scale Control Plus Meter. This sounds an alarm signal when the cartridge needs to be replaced. Part E describes how to install this meter.

Total hardness (°dH)	* Cartridge lifespan (in weeks)
Mains water	PRO3 (Type A and Type B)
10	34
11	31
12	29
13	27
14	25
15	23
16	22
17	20
18	19
19	18
20	17

* The cartridge lifespan is based on the average consumption of Quooker water for a Pro3 tank, of 3 litres per day.

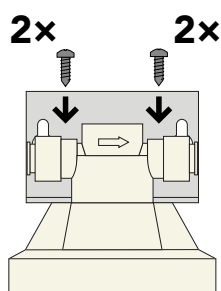
	Cartridge 1	Cartridge 2
Lifespan		
Installation date		
Replacement date		

C

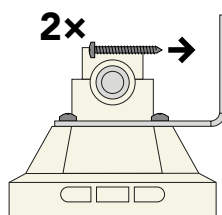
Mounting the Scale Control Plus

- When mounting the bracket, make sure to leave enough space for the cartridge to be replaced.
- For a type A and type B tank.

1



2



1. Mounting the bracket

Screw the bracket into the head of the cartridge using the four short screws provided.

2. Mounting the bracket

Screw the bracket onto the kitchen cabinet wall using the two long screws provided. Mount the bracket at least 50 cm high from the base of the cabinet.

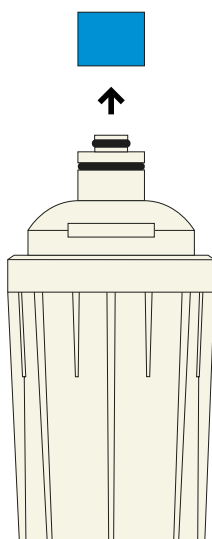
3. Removing the cap

Remove the blue cap from the top of the cartridge.

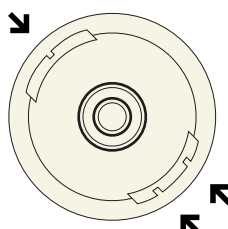
4. Aligning the cartridge

In order to insert the cartridge into the head of the Scale Control Plus, the protruding parts on the side of the cartridge need to be aligned with the notches in the head. When doing so, keep in mind that there are two grooves on one side of the cartridge and only one on the other side.

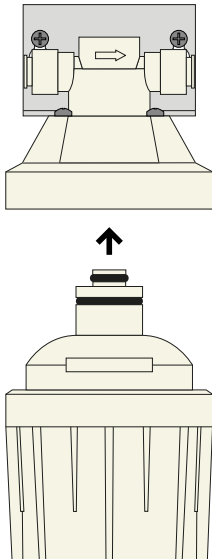
3



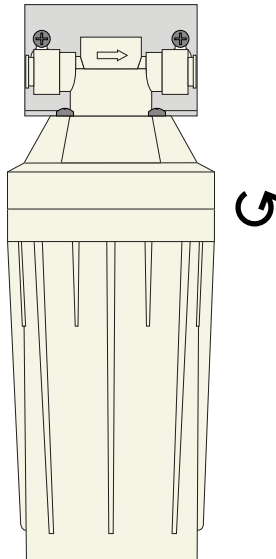
4



5



6

**5. Inserting the cartridge**

Firmly push the cartridge into the head of the Scale Control Plus until the groove between the cartridge and the head is no longer visible.

6. Securing the cartridge

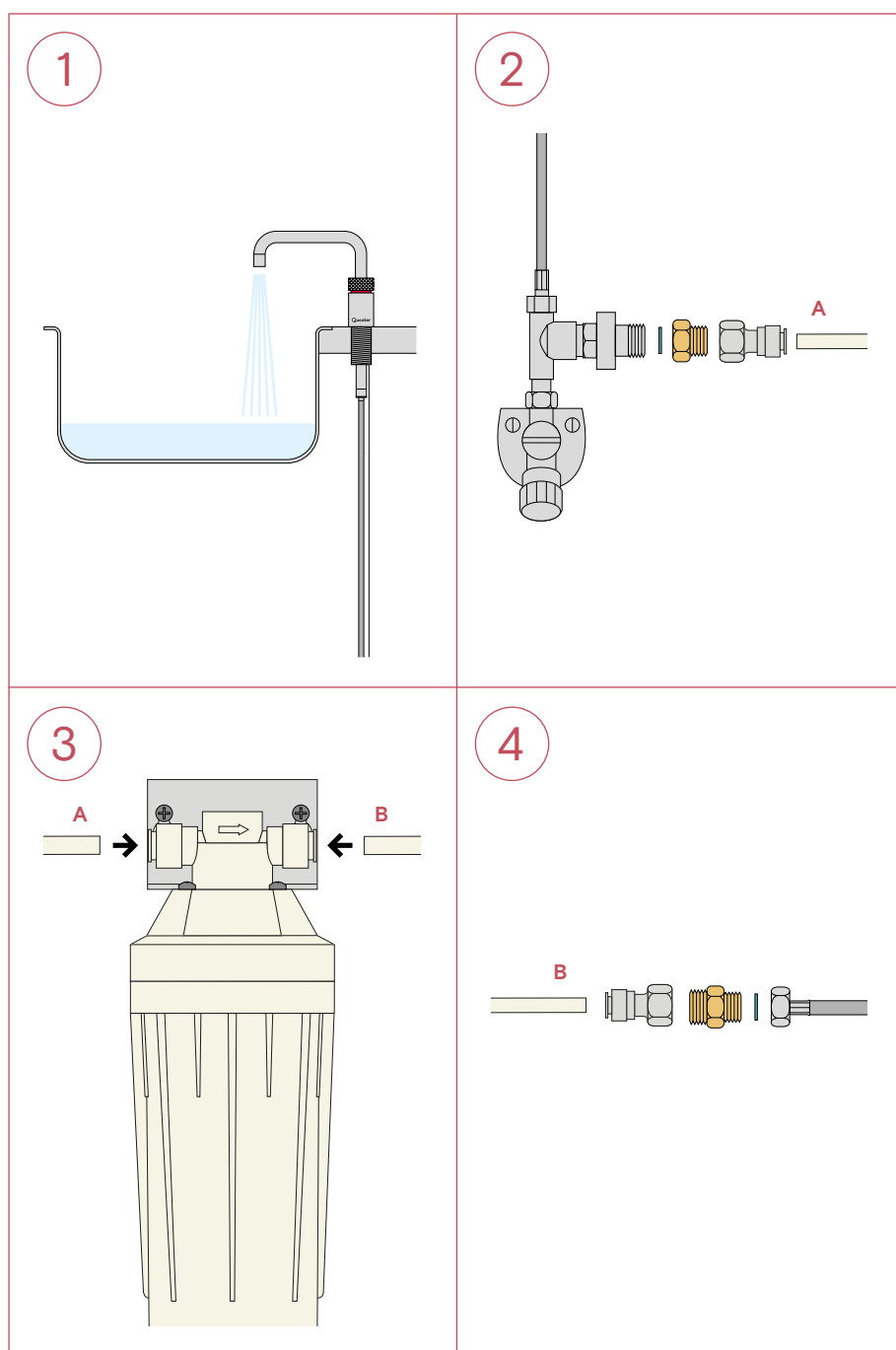
Now rotate the cartridge a quarter turn to the right to ensure that it is securely in place.

(For installation with a type A tank, continue to section D1. For installation with a type B tank, continue to section D2.)

D1

Installation with a type A tank

- Follow the steps below to install the Scale Control Plus with a type A tank.
- The 'Q' on the hood of the tank is the on/off switch.



1. Turning off the tank

Turn off the tank using the Q button, but leave the plug in the socket with the power switched on. Activate the boiling water tap and let the water run cold. Also run the cold water tap at the same time. Close the isolation valve or the mains cold water supply and then stop the boiling water tap.

2. Connecting the tube

Remove the cold water inlet tube from the inlet valve. Now mount the coupling piece on the inlet valve with a blue fibre washer, and screw the push-fit coupling onto it. Then connect one of the two plastic tubes (A) to the push-fit.

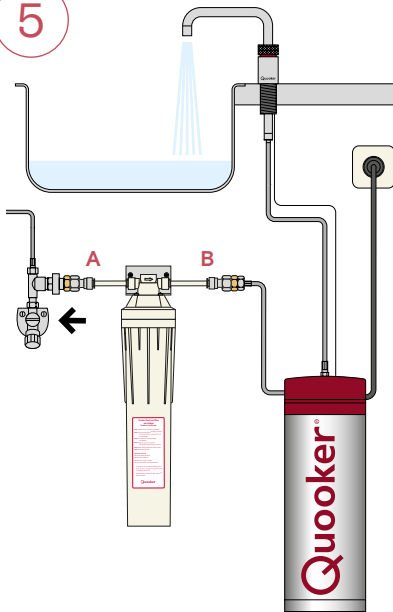
3. Connecting the Scale Control Plus

Now connect plastic tube A to the head of the Scale Control Plus. Take note of the connection direction (see the arrow on the head). Now connect the second plastic tube (B) to the other side of the head.

4. Mounting the inlet tube

Mount the push-fit coupling on the wider side of the adapter. Screw the inlet tube of the tank onto the other side of the adapter with a blue fibre washer. Now connect plastic tube B to the push-fit.

5



5. Flushing out the cartridge

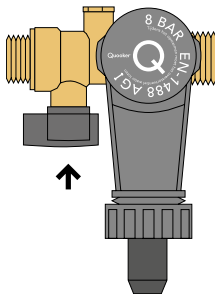
Open the isolation valve or mains water supply. Ventilate the system by activating the boiling water tap and run for 20 seconds. Check for leaks. Now activate the boiling function again and let the water run for about 5 minutes, until the water is once again clear. Turn on the tank using the Q button. Once the water has heated up again, the Quooker system is ready to use (continue to section E).

D₂

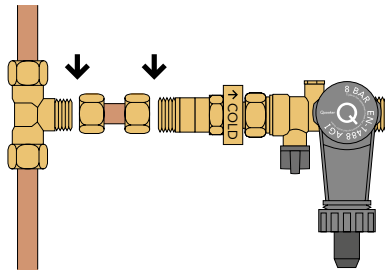
Installation with a type B tank

- Follow the steps below to install the Scale Control Plus with a type B tank.
- The 'Q' on the top of the tank is the on / off switch.

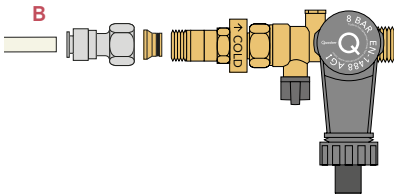
1



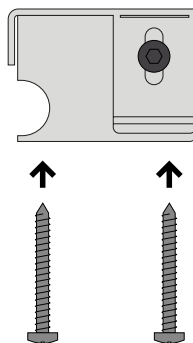
2



3



4



1. Turning off the tank

Turn off the tank using the Q button, but leave the plug in the socket with the power switched on. Activate the boiling water tap and let the water run cold. Also run the cold water tap at the same time. Close the inlet combination isolation valve and then stop the boiling tap. Turn off the mains cold water supply.

2. Removing the copper pipe

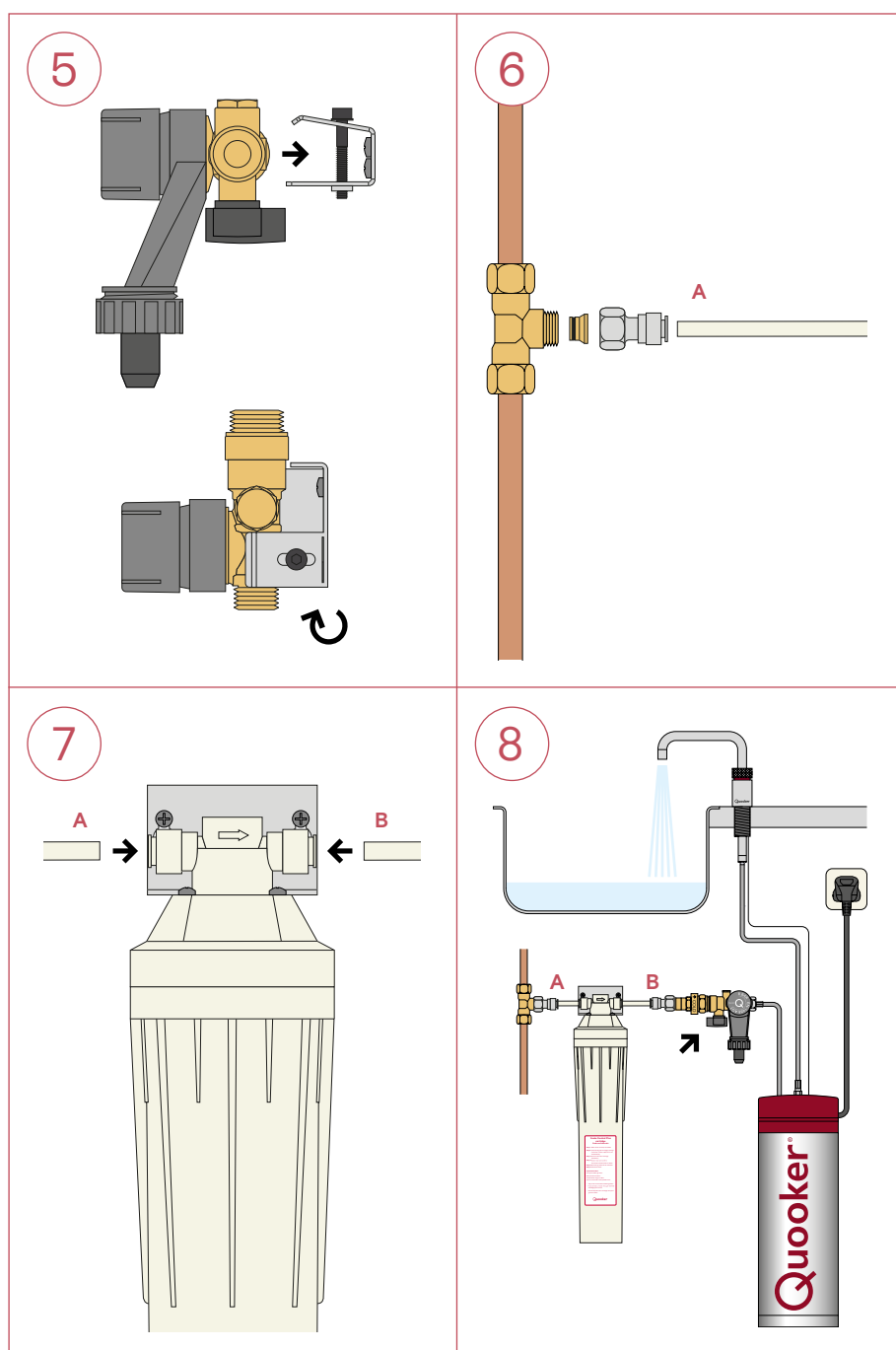
Remove the copper pipe between the T-piece and inlet combination valve, including the nuts and clamping rings.

3. Mounting the inlet combination valve

Mount the push-fit using the insert on the pressure reducing valve. Then connect one of the two plastic tubes (B) to the push-fit.

4. Mounting the bracket

Screw the bracket onto the kitchen cabinet wall using the two long screws provided.



5. Mounting the inlet combination

Insert the inlet combination into the bracket. Turn the screw on the top of the bracket clockwise using the supplied Allen key until the inlet combination is securely attached.

6. Connecting the tube

Mount the provided push fit connection using the insert on the T-piece. Then connect plastic tube A to the push-fit.

7. Connecting the Scale Control Plus

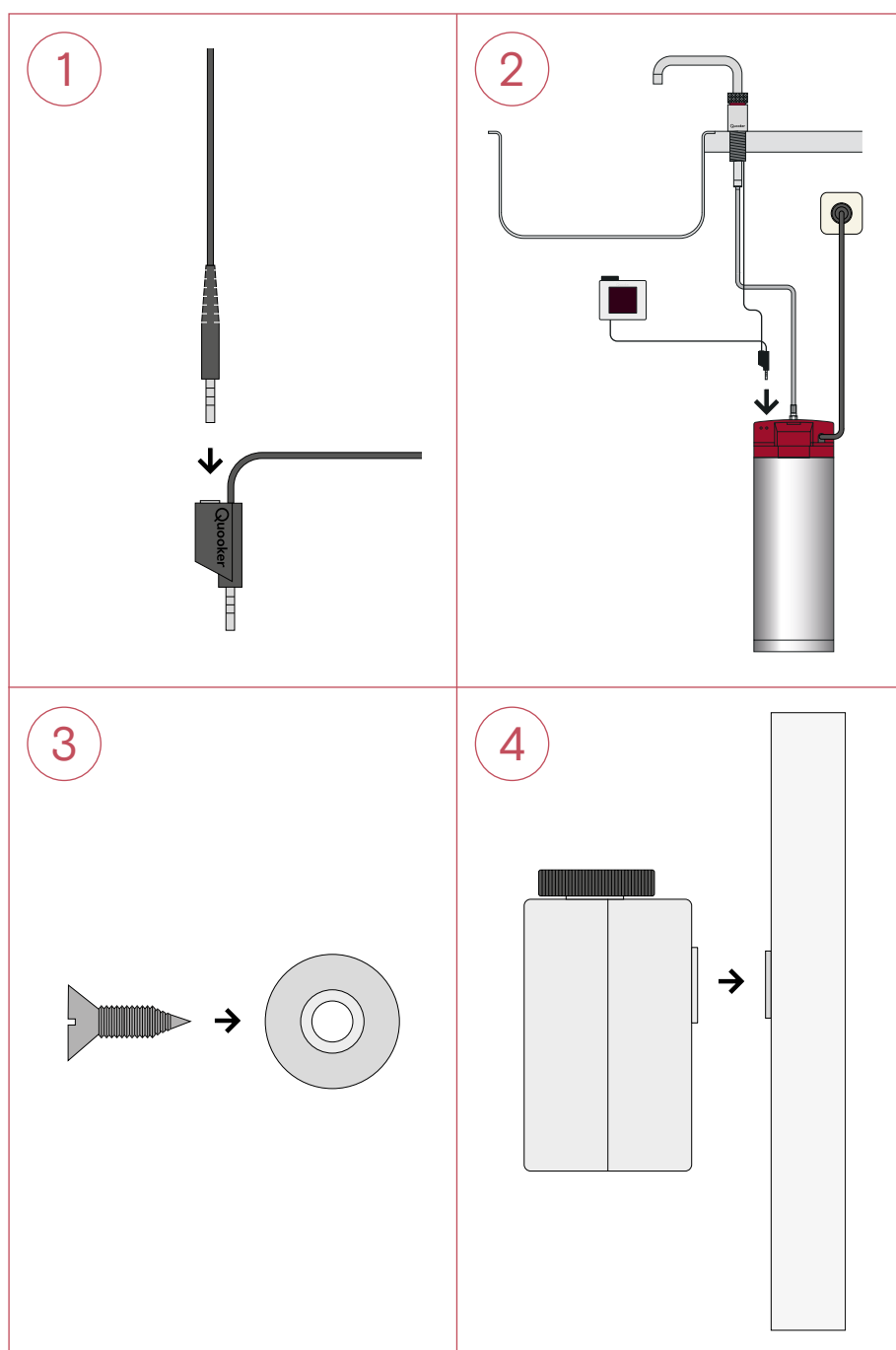
Now connect plastic tube (A) to the head of the Scale Control Plus. Make sure that this is done in the right direction (see the arrow on the head). Now connect the second plastic tube (B) to the other side of the head.

8. Flushing out the cartridge

Open the isolation valve or mains water supply. Ventilate the system by activating the boiling water tap and run for 20 seconds. Check for leaks. Now activate the boiling function again and let the water run for about 5 minutes, until the water is once again clear. Turn on the tank using the Q button. Once the water has heated up again, the Quooker system is ready to use (continue to section E).

E

Installing the Scale Control Plus Meter (for systems after October 2017)



1. Connecting the tap

Detach the tap's jack plug from the tank and insert it into the jack plug socket of the Scale Control Plus Meter.

2. Connecting the Scale Control Plus Meter

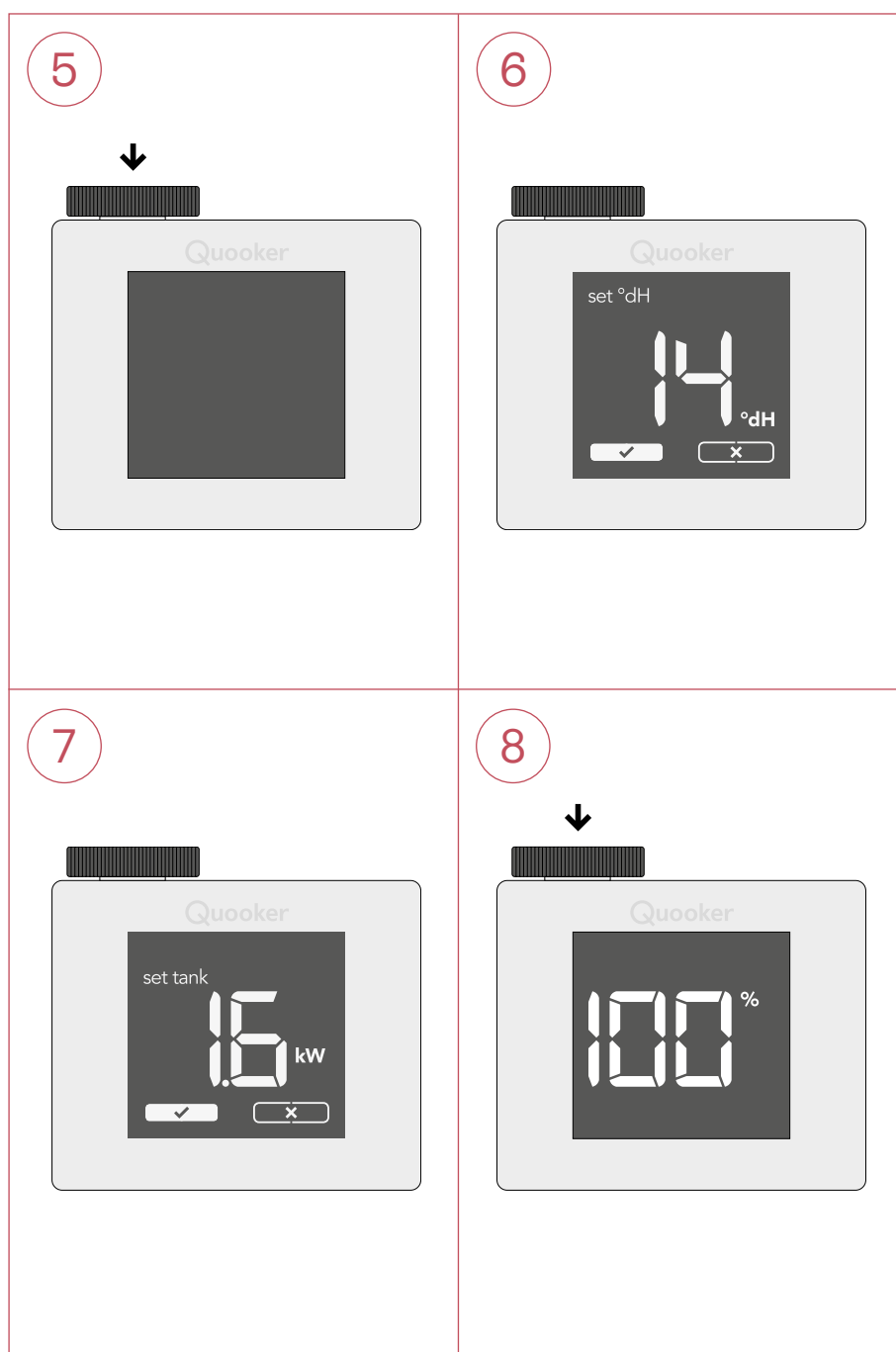
Insert the jack plug of the Meter into the inside port, closest to the centre of the tank.

3. Mounting the metal washer

Screw the washer provided into the kitchen cabinet using the screw provided.

4. Securing the Scale Control Plus Meter

Mount the Meter on the metal washer using the magnet on the back of the Meter. Affix the sticker provided next to the Meter on the inside of the cabinet.



5. Activating Scale Control Plus Meter

Initially activate the Scale Control Plus Meter by pressing the wheel until the screen lights up.

6. Setting water hardness

Turn and press the wheel to input the water hardness (found using the steps in part D). Press the wheel again to confirm.

7. Setting tank type

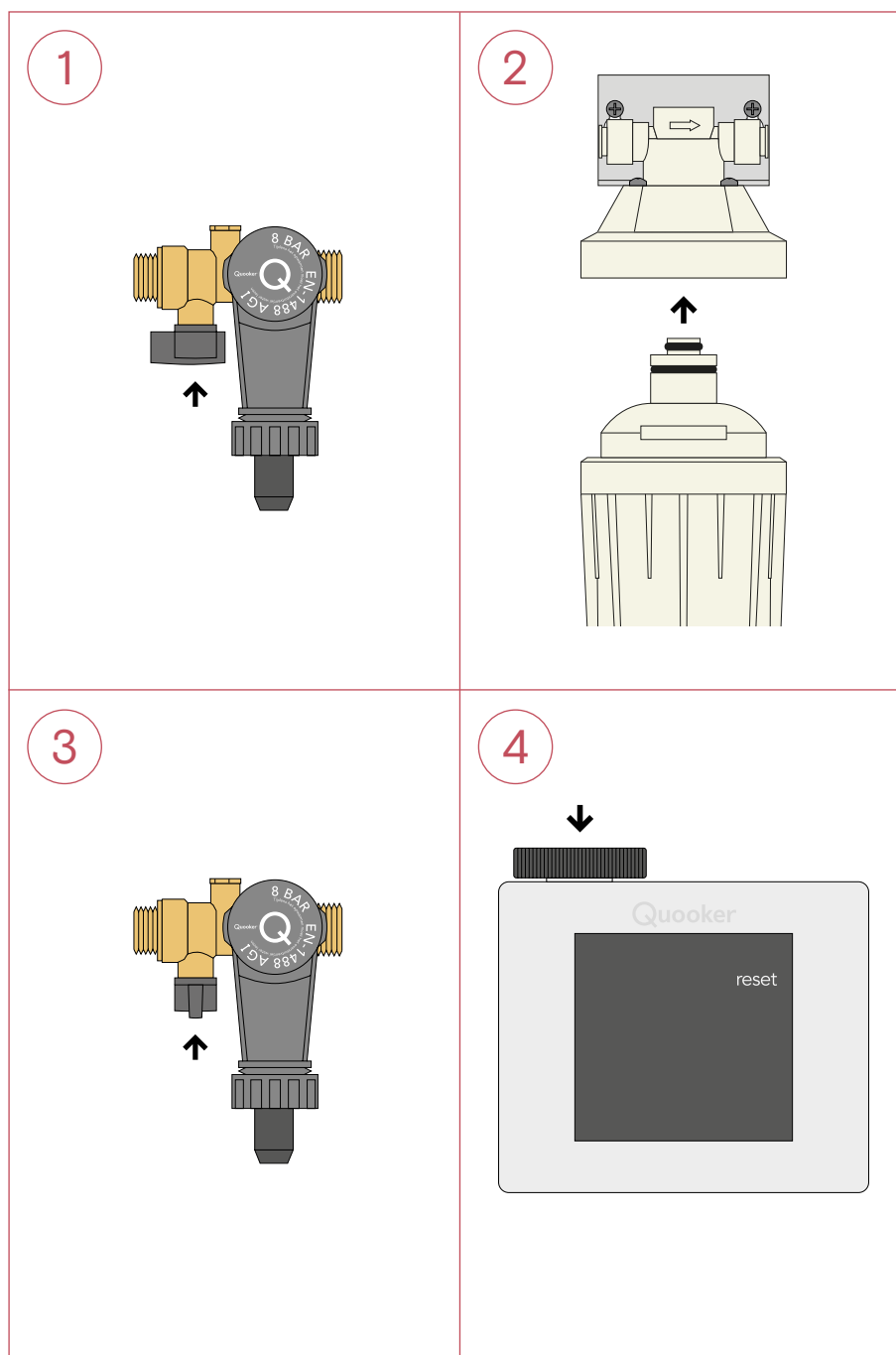
Turn the wheel again to set the power (in kW) in correspondence with the type of tank you have (see table below). Press the wheel when the correct value is highlighted. Press again to confirm.

8. Using the Scale Control Plus Meter

After setting the meter, '100%' will appear on the screen. This percentage represents the lifespan of the cartridge and will slowly count down to '0%'. When this happens, the meter sounds an alarm signal that the cartridge needs replacing.

Replacing the cartridge

- The cartridge must be replaced before it becomes completely saturated.
- The 'Q' on the top of the tank is the on/off switch.
- When installed with a Meter: If it is not possible to replace the cartridge when the alarm sounds, you can temporarily snooze it (for 72 hours) by pressing the wheel on the Scale Control Plus Meter.



1. Releasing the pressure

Turn off the tank using the Q button. Activate boiling and cold water together in order to release the pressure from the system and then close it once again when the water runs cold. Turn off the mains water supply, or in case of a type B tank, close the inlet combination isolation valve.

2. Replacing the cartridge

Detach the saturated cartridge by twisting it out of the head and replace it with a new one.

3. Flushing out the system

Turn on the mains water supply, or in case of a type B tank, open the inlet combination isolation valve. Ventilate the system by activating the boiling water tap and run for 20 seconds. Check for leaks. Now activate the boiling function again and let the water run for about 5 minutes, until the water is once again clear. Turn on the tank using the Q button. Once the water has heated up again, the Quooker system is ready to use.

4. When installed with a Meter: resetting the Meter

Turn on the Meter by pressing the wheel once. Turn the wheel to 'reset' and press the wheel to confirm.

Quooker®

Quooker UK Ltd.
Beaumont Buildings
Great Ducie Street
Manchester M3 1PQ
+44 (0)207 923 3355
enquiries@quooker.co.uk
www.quooker.co.uk